

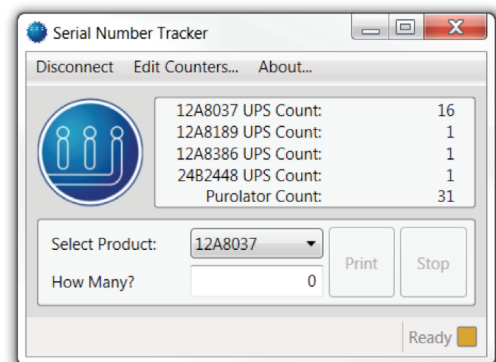


Industrial Inkjet MPhIQ-DocPro

The MPhIQ-DocPro from Industrial Inkjet Ltd delivers Fast, Economic printing of high resolution variable data at speeds of up to 200m/min. This stand-alone solution is designed for variable printing onto roll material either roll to roll; roll to cut sheet or roll to fanfold.

The MPhIQ-DocPro provides the lowest cost-per-print and highest productivity. Using high optical density UV curable inks, printing onto coated and uncoated papers at high speed is simple and cost effective. Additionally a wider range of materials are possible including foils and films. With true printing resolutions up to 1200dpi, small fonts, Asian fonts and complex barcodes are simply achieved.

The IJ MPhIQ-DocPro System combines Konica Minolta inkjet technology with precision material handling from AB Graphics. Innovative use of the media handling allows zero waste due to job change over and machine stop/start. Security inks such as IR visible and pigmented UV visible inks are available, especially useful for brand protection applications. In addition using the hidden track and trace data software package, anti-counterfeit, and brand protection features can be added to standard artwork, even containing variable data.



With an easy to use touch screen interface, print jobs can be stacked and preloaded for effortless change over. Also numbering features can be controlled eliminating duplicates and missing numbers, ensuring even security documents can be confidently printed.

Cost per print

Typical barcode

Size 32.2 x 7.4 mm

= US\$17 / 1,000,000 codes

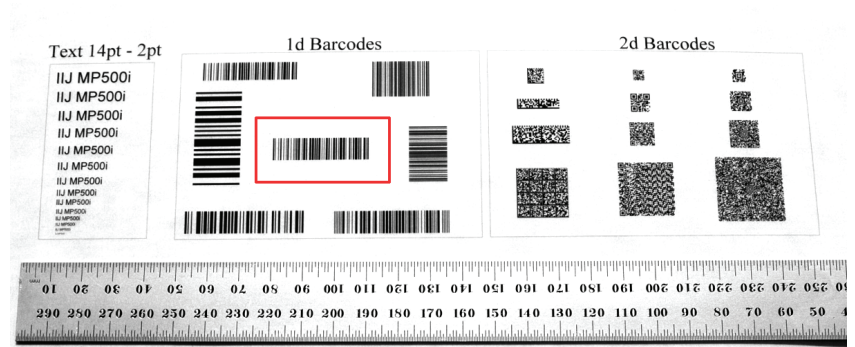
Typical mixed text and barcode

Size 250x70mm (as shown)

= US\$ 0.35 / 1000 codes

= US\$0.02 / m²

= US\$ 1.24 /1000 x A4 images



Technology			
Printing Technology	Konica Minolta Piezo DOD inkjet		
Curing Method	UV LED		
Ink	UV curable inkjet ink		
Inspection & verification	Linescan inspection and data verification		
Hidden data	Hidden track and trace imaging software		
Print specification		600 x 1200	1200 x 1200
Print Resolution (dpi)	600 x 600	100 m/min	100 m/min
Maximum Print Speed	203 m/min 665 ft/min	332 ft/min 513mm / 20.2"	332 ft/min 513mm / 20.2"
Maximum print width	513mm / 20.2"		
Productivity (PPM)			
A4 Landscape	940	470	470
A4 Portrait (2 up)	1300	650	650
A3 Landscape	650	325	325
B2 Portrait	280	140	140
US letter Landscape	915	462	462
US letter Portrait (2 up)	1420	710	710
US Legal Landscape	710	355	355
US Legal Portrait	460	230	230
Media handling			
Maximum web width	520mm / 20.5"		
Max. Roll Diameter	1m		
Media thickness	40 to 240 gsm		
Options	Cut sheet module; Fan fold module		
Dimensions			
Length	5000mm / 16' 4¾"		
Depth	1730mm / 5'8"		
Height	1800mm / 6'		
Power requirements			
Voltage	380 - 415V 3-phase		
Current	63A per phase		
Compressed air	6 bar 300LPM		

1 Based on roll to roll only. Roll to sheet maximum speed = 110m/min. Fan fold speed = 50m/min approx.

2 Based on roll to roll only.